

# YLP Welcome Guide



30250 Yosemite Springs Park  
Coarsegold, CA 93614  
[www.yosemitelakespark.org](http://www.yosemitelakespark.org)  
May 2023 Revised





# Welcome

This is a unique and wonderful community and we at Yosemite Lakes Owners' Association are here to help you enjoy our amenities and to answer any questions you may have. We encourage you to get involved in the many groups and activities available to residents. We look forward to working and playing together.

## MEET OUR GENERAL MANAGER

**Jonathan Penrose** joined our YLP team as General Manager of YLOA and YSPUC in May 2018. As General Manager, Jonathan is responsible for providing leadership and long term vision for our community, ensuring the financial stability of YLOA/YSPUC, and directing our 10 departments and staff of approximately 100 employees.



Jonathan earned an MBA from UCLA Anderson School of Business in 2003 and holds an undergraduate degree from UCLA in Cybernetics with a Specialization in Computer Studies; where he was also a Departmental Scholar in Computer Science.

His background in Finance, Technology, Insurance, and Business Consulting is helping us improve our operational efficiency, address decades of deferred maintenance, improve and update our amenities, strengthen our financial reporting, and develop viable and affordable strategies to improve our water plant and road network.

“Our ultimate goal”, says Jonathan, “is to foster and develop community and connection; to utilize our financial resources to maximize the enjoyment and utilization of our amenities; and to ensure the health and vibrancy of YLP for years to come.”

We have made significant progress in the last few years, including enhanced communications, and improved technology. This process, however, is and will be an ongoing journey.

I invite you to join us, to get involved, to help make a difference,

**Welcome to Yosemite Lakes Park — ‘Love where you live!’**

# Association at a Glance



Located between Yosemite National Park and Fresno near the unincorporated town of Coarsegold, Yosemite Lakes Park (YLP) is 21 square miles with an elevation range of 900 to 2,200 feet. Lot sizes are from one acre or larger with a total of 2,267 lots. We share the natural landscape of a variety of oak and pine trees, pristine views of snowcapped mountains in the winter and native plants throughout the year.

Yosemite Lakes Park (YLP) is administered by an elected board of the Yosemite Lakes Owners Association (YLOA) and is governed by federal and state statutes, YLOA Bylaws and the Declaration of Restrictions. The Environmental Control Committee (ECC) oversees architectural, and property change requests and compliance in support of the YLOA Declaration of Restrictions and ECC guidelines and encourages development and maintenance of the YLP community to preserve and enhance property values. The General Manager oversees day to day management of HOA staff as well as Yosemite Spring Park Utility (YSPUC), our private water company.

YLOA amenities include a 9-hole golf course with pro shop next to the Fairway Café. The equestrian center, recreation area with a lighted ball field, picnic areas, basketball court and playground are centrally located close to the Madera County Fire Station #10.

The YLOA business office is in the clubhouse along with a large selection of books in the lending library. Members and visitors can enjoy dining at the Blue Heron Restaurant and Yosemite Grill located in the clubhouse.

Merchants in YLP, and in close proximity, include a gas station, hardware store with shipping and mailbox options, real estate brokerages, grocery store, liquor store, exercise gym, hair salons and a dog groomer provide residents convenience close to home.

Love Where You Live!



# CLUBHOUSE



## CLUBHOUSE

The Clubhouse at YLP is the heart of our Sierra foothills community. Located just off Yosemite Springs Parkway and surrounded by several lakes, it houses the offices of Yosemite Lakes Owners' Association (YLOA), Yosemite Spring Public Utility Company (YSPUC), the Blue Heron Restaurant and Yosemite Grill and bar.

The spacious Fireside Room features a beautiful stone fireplace which opens to seating at the Yosemite Grill and onto a generous deck with outdoor dining. The Fireside Room and deck provide ample space for dining, meetings, and events.

The Clubhouse provides the perfect location for hosting a beautiful indoor affair or outside for a lakeside wedding beneath an elegant gazebo. Our experienced event coordinator will assist with all aspects of planning that special day.

The newly remodeled lending library across from the Blue Heron is thoughtfully maintained by the Ladies of the Lakes and provides a great selection of current and historical books as well as several books written by YLP authors.

The YLOA and YSPUC office hours are 8 a.m. to 4:30 p.m. Monday through Friday, and closed on holidays. The office phone number is (559) 517-3499.





# BLUE HERON RESTAURANT & YOSEMITE GRILL

The **Blue Heron Restaurant** is regarded as one of the best restaurants in the Coarsegold area. Globally inspired cuisine sourced ethically from the Central Valley and beyond are served up in a relaxed-upscale setting.



**Dave Pol** is an extraordinary chef and manager and we are extremely fortunate to have a chef of his caliber and experience.

Chef Pol first worked for YLOA from 2000 to 2005, at which point he was recruited to be the Executive Chef for Fort Washington Country Club.

From 2010 to 2014, Dave was the Assistant Director of the IOT Culinary Arts Program, where he oversaw 15 instructors and 400 students. From 2014 through 2021, Dave again did a fabulous job for us, significantly improving the quality and financial performance of the Heron. We are thrilled Chef Pol is once again sharing his warmth and culinary expertise at the Blue Heron.

Dave has done a fabulous job for us, significantly improving the quality and financial performance of the Blue Heron Restaurant. **Call**

**559-517-DINR (3467) for reservations.**



## YOSEMITE GRILL

After a round of golf, enjoying a day with the family at the pool, or walking the many trails in Yosemite Lakes Park, the **Yosemite Grill** at the Clubhouse is the place to go. The menu has a variety of items from appetizers to sandwiches to BBQ ribs and more. Dine in the bar while watching your favorite team on our screens or enjoy eating on the deck overlooking the lake.







## GOLF COURSE

A gem in our own backyard!

Our beautiful 9-hole course takes you through a peaceful setting with five holes over water, some tight fairways, demanding greens, and is sure to challenge anyone's game.

The Yosemite Lakes Golf Committee (YLGC) meets the second Tuesday of the month to organize tournaments, monthly scrambles, and events. (see the community calendar for time)

Join the fun on Tuesday and Thursday mornings when the YLP ladies' group tee off. The men's group meets Mondays and Fridays to challenge the course and their handicap!

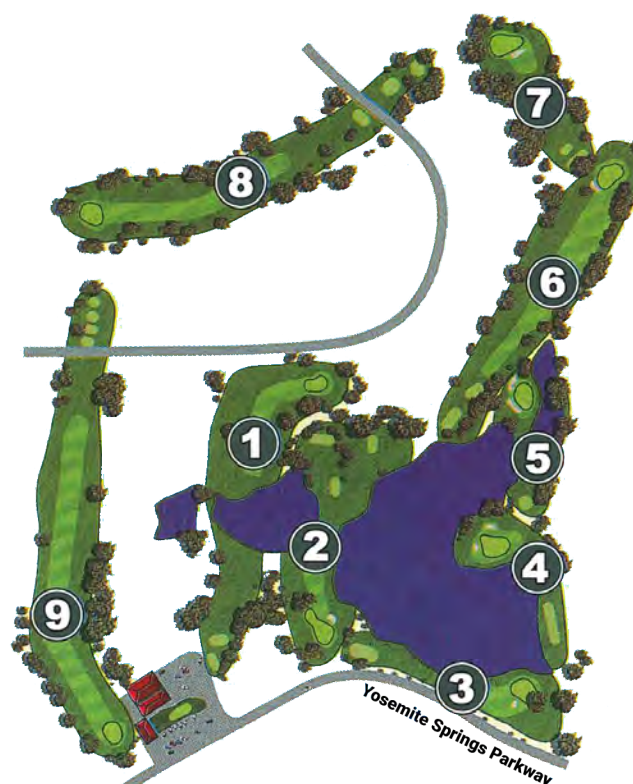
For information on local rules, regulations and men's and women's groups, contact the Pro Shop at 559-517-3474 or the YLP office 559-517-3499 or go to: [yosemitelakespark.org/golf](http://yosemitelakespark.org/golf).

**RESERVE TEE  
TIMES AT OUR  
GOLF PAGE**



### LOCAL RULES & REGULATIONS

- All players must register at the Pro Shop.
- USGA rules govern all play except local rules.
- All players must have clubs.
- Metal spikes not allowed on golf course.
- Out of bounds left of #1/10, 6/15, 7,16, 8/17 and 9/18.
- Out of bounds right side of #2/11, 3/12, 4/13, 8/17 and 9/18.
- Out of bounds rear of #1/10, 8/17, and 9/18.
- A ball will not be played from landscaped areas - Free drop.
- Keep all golf carts 20 feet from greens.
- Replace divots, repair ball marks, rake sand traps.
- Any ball striking a power line shall be replayed, no penalty.
- Course marshal and staff govern all play.







## FAIRWAY CAFE

The Fairway Cafe at the Yosemite Lakes Golf Course offers delicious breakfast and lunch:  
[yosemitelakespark.org/fairway-cafe](http://yosemitelakespark.org/fairway-cafe).

Check out the Fairway Cafe menu at



or phone (559) 517-3470.





# YLP TRAILS

YLP has miles of trails for walking, running, and horseback riding. The most popular surrounds Blue Heron Lake. Others run through YLP green spaces and along Lilley and Revis mountains. Our Trails and Recreation Committee members work to keep the trails marked and cleared.

## TRAIL EASEMENTS

Easements of five feet along the front, sides, and rear of each lot exist for the use and maintenance of recreational trails, including bridle trails.

## ROAD EASEMENTS

Parking is very limited at the trailheads. The Governing Documents state "No vehicle shall be parked on the paved portion of any street in the Subdivision". You are allowed to park on the road easement between the property line and the pavement. For fire safety do not drive or park on vegetation higher than 2 inches.

## Revis Mountain Trail

There are two trails over North Dome that criss-cross. One starts at the Revis Lane East fire road and goes over to North Dome Road near Quail Court.

Both of the trail starts are steep ascents, but once you reach the ridge 1/2 mile up, you have a mile of fairly flat expanse with a panoramic 360 degree view of the area; well worth the climb.

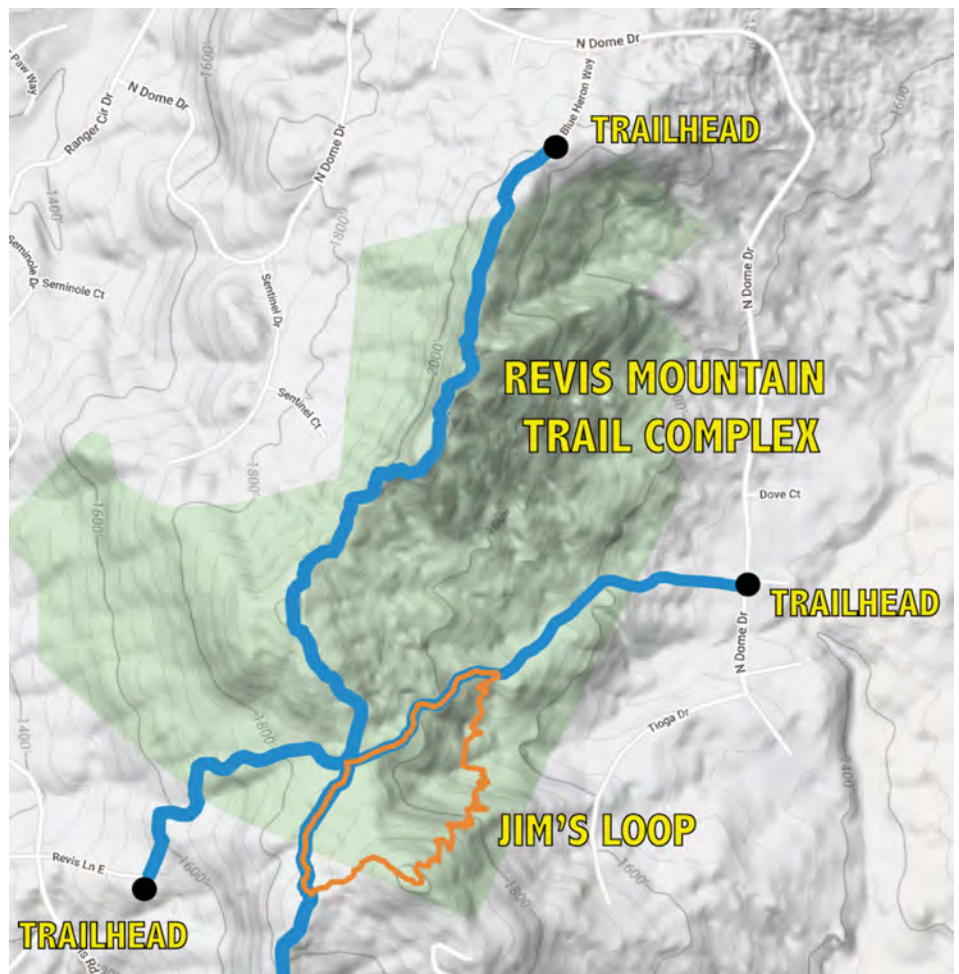
At the ridge there is an equestrian trail that goes either way; a perfect spot for a picnic. Remember, pack it in and pack it out.

This is also a trail where you might want to take two cars and park one on Quail Court so you don't have to hike back. Quail Court and Revis Lane East are cul-de-sacs, so have limited parking, but could accommodate three cars.

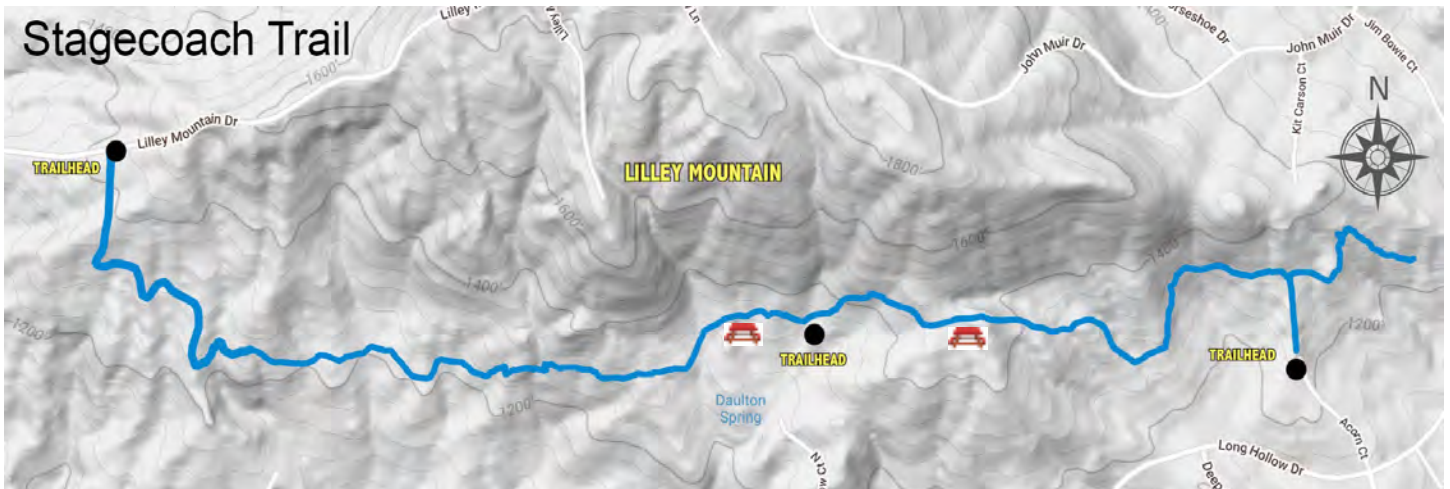
The trail head on North Dome east of Quail Court is the fire road. Another approach to the North Dome hikes is Blue Heron Court.

There is parking on the road leading into the cul-de-sac. You must not park in the cul-de-sac as it is a helicopter pad.

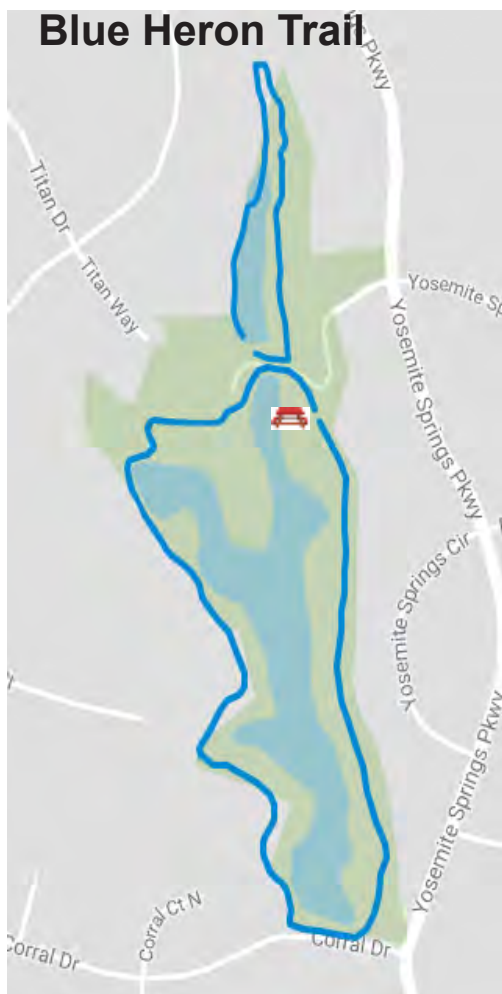
The hike goes past the water tank, past some large rocks to the ridge, an easier way to the ridge, and the panoramic view. The first 60 to 90 yards is steep; after that it just meanders up and down.





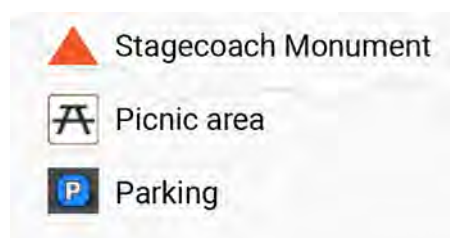


Hikers may enter from the north end of Long Hollow Court North. A drive on a property line easement ends in a rough dirt road to just west of a YSPUC water tank. A small number of vehicles may park in an open area just northeast of the big oak tree, but a route must be kept clear at all times for YSPUC vehicles to access the gated area around the water tank. The area around the trail on the south side of Lilley Mountain was the old stagecoach road to Yosemite, commemorated by a new E Clampus Vitus monument near the water tank. Just west of the tank are two large expanses of rock with the remains of old Indian grinding holes. A century-old palm tree stands just south of the water tank. To the east, the trail meanders uphill and can be quite steep at times but is a pleasant hike, especially in the spring.



1.5 miles around, fairly flat and easy. This trail encircles the lake at the Clubhouse. You can park at the Clubhouse and enter the trail behind the swimming pool or park at the volleyball court and enter the trail to the left of the lake. This trail is walked by many people and we ask if you take your dogs, please keep them on a leash and take with you one of the doggy poop bags that are conveniently placed at either start of the trail. You may dispose of the bags in one of the many garbage cans located in the area.

### MAP LEGEND





# AMENITIES



## SWIMMING POOL

A dip with the family in the competition size swimming pool located next to the Clubhouse is a great way to spend a summer day. The lighted pool area also provides a jacuzzi and kiddie pool.



## TENNIS COURTS

Two fenced and lighted courts adjacent to the pool provide an opportunity for exercise and competition. One court is marked for Pickleball enthusiasts.



## REC CENTER

The YLP Rec Center is located on Long Hollow Drive just past the Equestrian Center and Glacier Drive.

The center hosts a lighted softball field, basketball court, and playground. The horseshoe pits and picnic area with tables and barbecue grill are a wonderful spot for a day of fun with the family.

In Spring the ball park is host to the Yosemite Little League and Yosemite Adult Softball League.







## EQUESTRIAN CENTER

The YLP Equestrian Center is a co-op boarding facility centrally located at the corner of Yosemite Springs Parkway and Long Hollow Drive across from the Valero gas station. The center provides two lighted arenas, a round pen, an obstacle trail course, access to several miles of trails, and many other features.

For boarding information, email [barnadmin@yloa.org](mailto:barnadmin@yloa.org)

The Equestrian Committee meets the second Thursday of the month (see the online events calendar for time and location).





# OUR COMMUNITY

Clubs, organizations, and other scheduled activities are a great way to meet friends and be involved.

## LADIES OF THE LAKES

Ladies of the Lakes is a women's club devoted to promoting interests and activities that enhance the quality of life in Yosemite Lakes Park. Since 1977 the club has hosted a variety of fund-raising events and various activities throughout the year that support the Ladies of the Lakes Scholarship Fund and other charitable causes.



Scholarships are awarded annually to graduating high school seniors who demonstrate academic achievement and leadership and plan to attend college following their senior year. The members are proud to have awarded over \$200,000 in scholarships to deserving high school seniors. The community looks forward to the annual Rigatoni Dinner which helps with funding the scholarships.

The annual Holiday Boutique in November is a major fund-raiser that supports the club and community activities. Events include the annual Easter Egg hunt for the kids, the Garden Club and partnering with Yosemite Lakes Owners' Association for the annual Party in the Park, Fall Festival and Cookies with Santa.

General Meetings are held in the YLP Clubhouse on the third Monday of the month January through June and September through December, no meetings are held in July and August. For additional information and membership application go to: [ladiesofthelakes.net](http://ladiesofthelakes.net).

Ladies of the Lakes is a 501(c)(3) organization.

## YLP LIVE

Bring the family and join with friends for a fun evening at the clubhouse lake. Enjoy live music and dancing every Friday night from May to September. The Blue Heron Restaurant and Yosemite Grill are open 5-9 p.m. and music plays 7-10 p.m.

## PARTY IN THE PARK

The Party in the Park is held each year in May by YLOA partnering with Ladies of the Lakes. This fun-filled day begins at the clubhouse with opening events and continues throughout the day with games, music and fun for the whole family. Lunch is made available for purchase from the Blue Heron followed early evening with dinner and dancing.

The 2023 event also includes events and fun at the Equestrian Center, the Recreation Center, swimming pool and the golf course.

## SAFETY AND HEALTH FAIR

Hosted by the YLOA Disaster and Safety/Health committee and held annually in September at the clubhouse, this event brings together resources from both our community and the surrounding areas and is a great opportunity to learn about fire safety, and gather information from medical and health organizations. Eastern Madera County SPCA offers dog and cat microchipping. Visit with the California Highway Patrol and Madera County Sheriff's Office staff. Cal Fire and Madera County Fire Departments have a variety of fire fighting trucks on display, which are great fun for the kids.

## FALL FESTIVAL

Held in October, this annual event brings families together to enjoy games, food, and fall festivities. Activities have included a wonderful scarecrow contest, crafts for the kids, story time, games and events for all ages.

## COOKIES WITH SANTA

Bring the kids for this annual holiday celebration with cookie decorating, holiday crafts, and of course a special photo opportunity to meet Santa.

## RIPPITS

An informal gathering of quilters, knitters, and makers happens every Wednesday from 10:00AM-12:00PM in the clubhouse. Bring a favorite project, meet with other makers and share projects and tips. Art, crafts and hobbies are made even more enjoyable with friends!

## YLP LIBRARY

The beautifully remodeled lending library offers a varied selection of reading options, including a large section of children's books.

Books have been made available by generous donations from residents and thoughtfully maintained by Ladies of the Lakes and other supporters. Donation information is located in the library.

## COMMUNITY-LED GROUPS

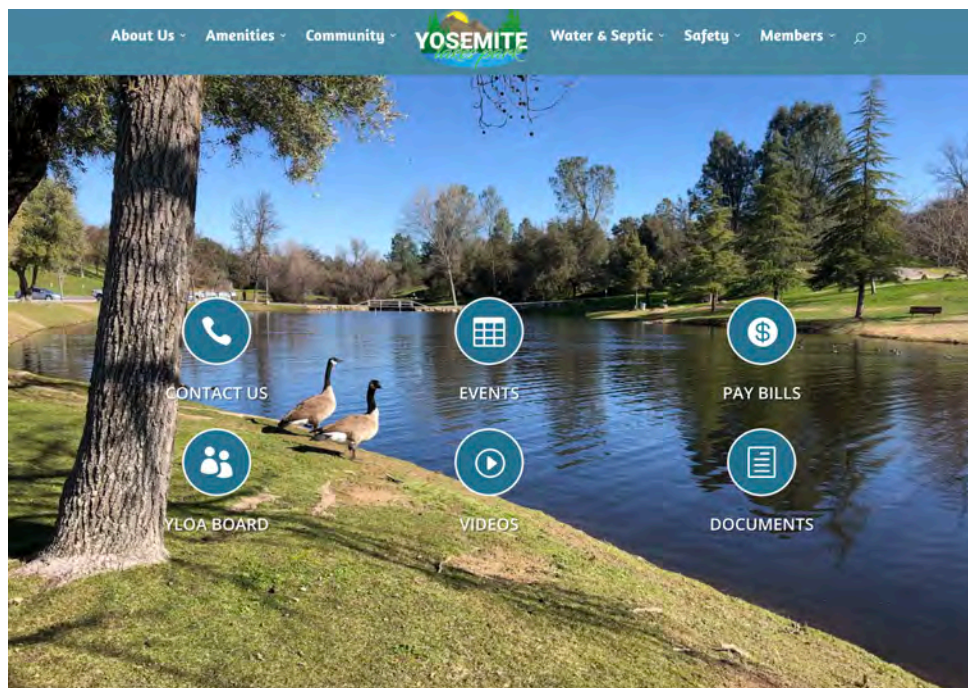
A variety of community-led groups regularly meet in the clubhouse. These currently include Board Games, Watercolor, Yoga, Dance and more.

Refer to the Community Calendar at [yosemite-lakespark.org](http://yosemite-lakespark.org) for up-to-date information on days and times for the groups as schedules and offerings may change.



# COMMUNICATION

The YLOA Board of Directors and YLOA staff are committed to keeping members and residents regularly informed about association-backed news and events at **yosemitelakespark.org** and in our weekly e-newsletter **YLP Life**.



Our website is the main route of communications within the YLP community. Visit [yosemitelakespark.org](http://yosemitelakespark.org) to view the Community Calendar, office contact information, amenities, and an introduction to our Board of Directors. Important information about YSPUC, our water utility, is provided. You can also access various documents (some of which can be filled out online) and view a variety of general interest stories.



Be sure to sign up for YLP Alerts, YLP Notify & join meetings online at **yosemitelakespark.org/signup**.



Additional county alerts can be obtained by signup at Madera County Community & Emergency Alerts at **maderacounty.com/government/sheriff/community-emergency-alerts**.



**YLP Life**, sent every Friday, is upbeat and informative and provides community news and helpful advice including upcoming events at the Blue Heron and the Fairway Cafe. This is a simple and direct way to obtain official notice of YLOA and YSPUC board meetings and other events. **yosemitelakespark.org/signup**.

Go here to sign up:



The official Facebook page of YLOA & YLP provides announcements and information. To join, go to **facebook.com/yosemitelakespark**.







# YLP PRIVATE SECURITY

PPO # 10839



**Tammie Hairell**

TammieH@YLOA.org  
yloa.org/security  
(559) 760-7979

Welcome to YLP! We are dedicated to serving the many needs of our residents. I've worked in Yosemite Lakes since 2009, so I know the residents and can seek out security problem areas. Having our own security department is a comfort not only to me but to many other residents.

Service calls include accidents, storm damage, fires, vandalism, burglary, poaching, animal issues, and requests for welfare and house checks. We average 200-300 calls each month!

Animal calls may involve YLP Environmental Control Committee, YLP Road Dept. and Madera County Animal Services. Our voluntary Pet File may help reunite pets with their families.

Security patrols all of YLP and its properties including amenities and water sources. We attend all YLP events including YLOA meetings to make sure that everyone has a great experience.

We work closely with Madera County Sheriff's Department,

California Highway Patrol, Code Enforcement, Animal Services, Cal Fire, Fish and Wildlife, and YLP entities.

We are usually the first responders on a scene. We can set up perimeters, close roads, and assist immediately if needed. We expedite fire and medical aid calls by marking the scene for medical and fire personnel. We are here to provide the best service. If we can't help, we will direct you to the appropriate entity.

*Tammie Hairell*



## FREQUENTLY ASKED QUESTIONS

### **Can I walk my pet without a leash?**

Madera County requires that dogs must be on leash. Contact Madera County Animal Services at (559) 675-7891 regarding licensing or the leash law.

### **How do I report an animal issue?**

If a domestic animal is causing issues in YLP, first contact Madera County Animal Services at (559) 675-7891.

Loose or Aggressive Animals: Animal Services is equipped to handle and house aggressive animals. Then call Security so that they can assist.

Animal Noise Complaint: Call Madera County Animal Services to obtain help from local law enforcement. Also contact the YLOA office to record the noise ordinance violation.

### **Can you help if my pet gets out?**

Security can assist with your lost pet. Fill out a Yosemite Lakes Pet Registration Sheet ahead of time to help furry family members get back home. Check with Security to make sure they have a current record of your pet in the Pet File, or fill out the form on the website and attach a picture.

### **My mother lives alone. Can Security check on her?**

Security has adopted Madera County's Elder Orphan program to monitor vulnerable elderly residents. These checks include a face to face evaluation with the resident.

### **Are you allowed to fire a weapon in the park?**

No shooting is allowed for target practice and/or hunting animals, birds, etc. This includes archery, rifles, pistols, and pellet guns. This is a Madera County ordinance. For more detail,

please check the YLP website.

### **Can Security check my house?**

We provide free house checks for residents who are absent or feel the need for additional protection. Just fill out the form – available online. Madera County Sheriff's Department also provides this service.

### **What do I need to do before I burn?**

First, call (877) 429-2876 to see if it is a permitted burn day. NOTE: Yosemite Lakes Park is below 3,000 ft. You may burn a 4 x 4 pile of brush with a 10 foot clearance. An adult must be present with a shovel and a hose in case flames escape. A Burn Permit is required. Get one at:

<https://burnpermit.fire.ca.gov/>



# DASH

## Disaster and Safety/Health

### Evacuation Routes

Unpaved “Emergency Fire Roads” exist between Revis Lane East and North Dome Drive, and between Sequoia Court and Lilley Mountain Drive. These roads pass through the green belt areas and are negotiable by most vehicles except in times of heavy rain. These roads have chains to block the entrances that clip off or break apart to allow vehicle access. Residents will be directed to the safest routes by the governing authority on site. Do not enter a fire road with a vehicle without proper authorization except in the event of an emergency or when directed to do so by emergency or security personnel.



**Sequoia Court:** Residents west of Yosemite Springs Parkway unable to use their normal route on Long Hollow to Yosemite Springs Parkway will be directed to the fire road entrance on Sequoia Court. Take the dirt fire road over Lilley Mountain to Lilley Mountain Drive, turning left onto Lilley Mountain Drive as directed to Road 400.

#### Lilley Mountain Drive:

Residents living west of Yosemite Springs Parkway unable to exit the park north or west to Road 400 may be directed to the fire road entrance located on Lilley Mountain Drive across from Lilley Mountain Court. Take the dirt fire road over Lilley Mountain to Sequoia Court. Turn right onto Sequoia Court then Left on Long Hollow Drive as directed to Yosemite Springs Parkway.



**North Dome Drive:** Residents unable to use their normal route to Yosemite Springs Parkway will be directed to the south end of North Dome Drive to the fire road entrance opposite Quail Court. Take the dirt fire road over North Dome Mountain to Revis Lane East to Revis Road, then left or right on Revis Road as directed to Yosemite Springs Parkway.





# POINT OF CONTACT

## LOCATED INSIDE THE YLP CLUBHOUSE - 30250 YOSEMITE SPRINGS PARKWAY



### Yosemite Lakes Owners' Association

(559) 517-3499

<https://www.yosemitelakespark.org/>

Open Monday - Friday 8am - 4:30pm



### Yosemite Spring Park Utility Company

(559) 517-3799

After hours emergency line (559) 760-4349

<https://www.yosemitelakespark.org/yspuc/>

Open Monday - Friday 8am - 4:30pm



### Yosemite Lakes Owners' Association Private Security

PPO #10839

Tammie Hairell, Chief of Security (559) 517-3480

Patrol phone: (559) 760-7979 - All calls reporting incidents & **urgent calls**



### The Blue Heron Restaurant & Yosemite Grill

(559) 517-3467

<https://www.theblueherononline.com>

Wed. - Sat. 5pm - 9pm

## LOCATED AT THE GOLF COURSE - 42515 ARTESIAN COURT



### Fairway Cafe

(559) 517-3470

<https://www.yosemitelakespark.org/fairway-cafe/>

Open 7 days a week 7am - 2pm



### Yosemite Lakes Park Golf Course

(559) 517-3474

*Please call for playing times*

## OUTSIDE AGENCY PHONE NUMBERS

|   |                         |
|---|-------------------------|
| Emergency.....                                  | 911                     |
| Madera County Sheriff's Department.....         | (559) 675-7770          |
| California Highway Patrol.....                  | (559) 675-1025          |
| Cal Fire.....                                   | (209) 966-3622          |
| California Department of Fish and Wildlife..... | (559) 243-4005          |
| American Red Cross.....                         | (559) 455-1000 ext. 115 |
| Madera County Animal Control.....               | (559) 675-7891          |
| PG&E Emergency Line.....                        | (800) 743-5000          |
| Madera County burn day information.....         | (877) 429-2876 press 4  |



# LOCAL RESOURCES

## **HILLSIDE MARKET CENTER**

Yosemite Springs Parkway & Copper Creek Rd

Supermarket  
Liquor store  
Pet Groomer  
Gym  
Karate studio  
Hair Salon  
Gun shop  
Music school  
Paralegal Office/Notary

## **YLP REC CENTER**

Glacier Dr. & Long Hollow Dr.

Park Playground  
Basketball courts  
Baseball diamond

## **EQUESTRIAN CENTER**

Long Hollow Dr. & Yosemite Springs Parkway

Barn  
Boarding stalls  
Equestrian arena

## **YLP CLUBHOUSE**

Yosemite Springs Parkway & Clubhouse Dr.

YLOA offices  
Blue Heron Restaurant  
Yosemite Grill  
Library  
YLP Pool  
Tennis Courts  
Blue Heron Trail

## **YLP PLAZA**

Long Hollow Dr. & Yosemite Springs Parkway

Dollar Express  
Mailing Services (some USPS and FedEx)  
Gas station  
Real Estate agency  
Dentist

## **YLP GOLF COURSE**

Yosemite Springs Parkway & Artesian Ct.

Fairway Cafe  
Golf Pro Shop  
9 hole golf course

## **YOSEMITE LAKES COMMUNITY CHURCH**

Yosemite Springs Parkway & Patrick Ave.

Daycare  
John Muir Academy South at Yosemite Falls

## **YLP Storage**

Yosemite Springs Parkway & Rd. 400

## **AREA AEROBIC AND SEPTIC SERVICES**

AFFORDABLE PLUMBING SERVICE 559-658-1654  
BC CONSTRUCTION 209-742-7989  
BIG OAK SEPTIC SERVICE 559-683-7707  
BIO TECH 559-642-0490  
OAKHURST PLUMBING 559-683-2232  
STRONG SEPTIC SERVICE 559-676-8962  
MIKE'S T.P. PLUMBING 559-641-5566  
GOODELL TRACTOR AND SEPTIC 559-642-3100  
HINKLE CONSTRUCTION 559-260-0192  
ALTERNATIVE SEPTIC SYSTEMS 559-683-7474

## **TRASH AND RECYCLING**

Emadco - 559-683-4680

## **WATER**

Yosemite Spring Park Utility - 559-517-3799  
Emergency Line - 559-760-4349

## **CABLE AND INTERNET**

Vyve - 559-683-7388  
Sierra Telephone - 559-683-4611  
DirecTV - 866-991-6955  
DISH Network - 800-333-3474





# YOSEMITE SPRING PARK UTILITY COMPANY

## HOURS OF OPERATION

Business office hours: 8:00 am to 4:30 pm Monday through Friday. The business office phone number is (559) 517-3799. The business office is closed on all major holidays.

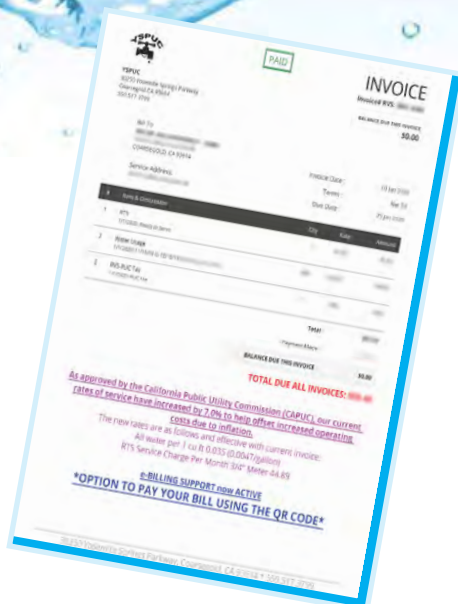
## WATER BILLING

Meters are read monthly and billing statements are sent out shortly thereafter. Please call us if you do not receive your statement. The breakdown of charges on your bill: water usage charge, Readiness to Serve (RTS) charge, and Public Utilities Commission (PUC) charge. We encourage you to sign up for online billing at [www.yosemitelakespark.org/payments](http://www.yosemitelakespark.org/payments).

## READINESS TO SERVE (RTS) CHARGE

Water utilities, like any other business, must be able to cover their daily operational costs, as well as provide some profit to fund additional growth, replace and repair aged or damaged equipment, and meet financial requirements. The California PUC determined that, based on its number of customers, the YSPUC can recover 65 percent of its fixed costs through a RTS charge.

Without this charge, the rates that YSPUC would have to charge for water would be much higher, as sales of water alone would not cover the costs of operations, at a rate that would appear to be reasonable to the consumer.



**PAY WATER BILL  
ONLINE**



## DISCOLORED WATER

Your water is being supplied to you from deep rock wells, and so occasional discolored water can occur. Slight discolor that quickly comes and goes is not a concern. However, if your water becomes dark and stays that way, then IMMEDIATELY take the following steps:

1. Contact the office (559) 517-3799 Monday Through Friday from 8:00 am - 4:30 pm.
2. After hours call (559) 760-4349
3. DO NOT turn on any water in or around your home, unless instructed by YSPUC. Never run your hot water while it is discolored. However, if you were running the hot water when your water becomes discolored you may need to drain your hot water heater as well.

## FLUSHING

When you are notified that it is OK to flush, start by turning on a hose outside of your home closest to the point where water enters your house. Run the water for approximately 15 minutes or until it becomes clear. If the water does not clear up within 15 minutes, STOP running the water and contact us immediately. It is also very important not to flush UNTIL YSPUC notifies you to start the flushing process. We apologize for any inconvenience this may cause and we will issue you 1 flushing credit that will be applied to your next month's bill.



# SOLID WASTE & SEPTIC SYSTEM



Solid waste and recycling pickup services are provided to YLP exclusively by Emadco based in Oakhurst.  
[www.emadcodisposal.com](http://www.emadcodisposal.com)

## Residential service

Residential service in YLP is paid by the quarter. This service provides a 64 gallon trash & 96 gallon recycling cart. Trash is picked up every week and recycling is picked up every other week. For the carts to be delivered to your home in YLP there is an extra charge. If you pick them up in Oakhurst there is no fee. You can sign up and pay for trash service with a credit card over the phone (559-683-4680).

## Roll Offs

20-30 yard roll off bins are available with a deposit.

## Rent-A-Bins

Rent-A-Bins are available for delivery in YLP every Thursday. This service is for a 3 yard cleanup dumpster. The price includes drop off/pickup and disposal of the contents in the dumpster.

Payment via a credit card over the phone is accepted for this service.

## RESIDENT TIP

- Bins should not be placed on the road.
- Bins should be placed out no more than 24 hours prior to pickup day and brought in within 24 hours after pickup

## Aerobic septic systems & inspections

Aerobic septic systems are installed in YLP because of the type of terrain throughout the association, to help protect the environment and are required by Madera County. The purpose of an aerobic septic system is to allow a cleaner effluent ("wastewater") to leave the septic tank. This is accomplished by pumping air into the tank, which encourages "aerobic bacteria" that breathe and work more efficiently, as opposed to anaerobic bacteria in a typical septic tank, which do not require air and are less efficient.

The treated effluent is then gravity fed or pumped out of the septic tank into the leach fields. When solids are not broken down properly, they may plug up pumps and/or leach fields costing hundreds of dollars in repairs. It is very important to make sure your aerobic system is working properly at all times and that the system is set to operate long enough to not only do the proper job, but to also eliminate odors.

All systems need to be accessible for the Aerobic Inspector to inspect at any time; this naturally includes access to properties with barriers at entrances. The Inspectors are not authorized to touch the units to see if they are operating properly. If, at the time of inspection, the unit is not running, the Inspector will mark that the timer box was off. The unit then must be considered faulty and failed.

Depending on the health risk factor, the homeowner will have 60 days or less to repair the faulty unit. If the homeowner has a legitimate reason that will cause them to exceed the 60-day grace period, more time may be allowed as necessary to complete the repairs.

Please contact the Customer Services and Support (CSS) at (559) 517-3499 for additional information that may further explain and assist you in understanding how an aerobic septic system works.



A scenic landscape featuring a large, mature tree with dense green foliage in the foreground. The tree's shadow is cast onto the ground. In the background, a calm body of water reflects the sky and surrounding trees. The shoreline is covered with dry, brown leaves, suggesting an autumn setting. A small, bright orange tree is visible on the right side of the image. The overall atmosphere is peaceful and welcoming.

*Welcome Home*